



# KNX-ZF WIRELESS SWITCHES

WITH A TOUCH OF GLASS™



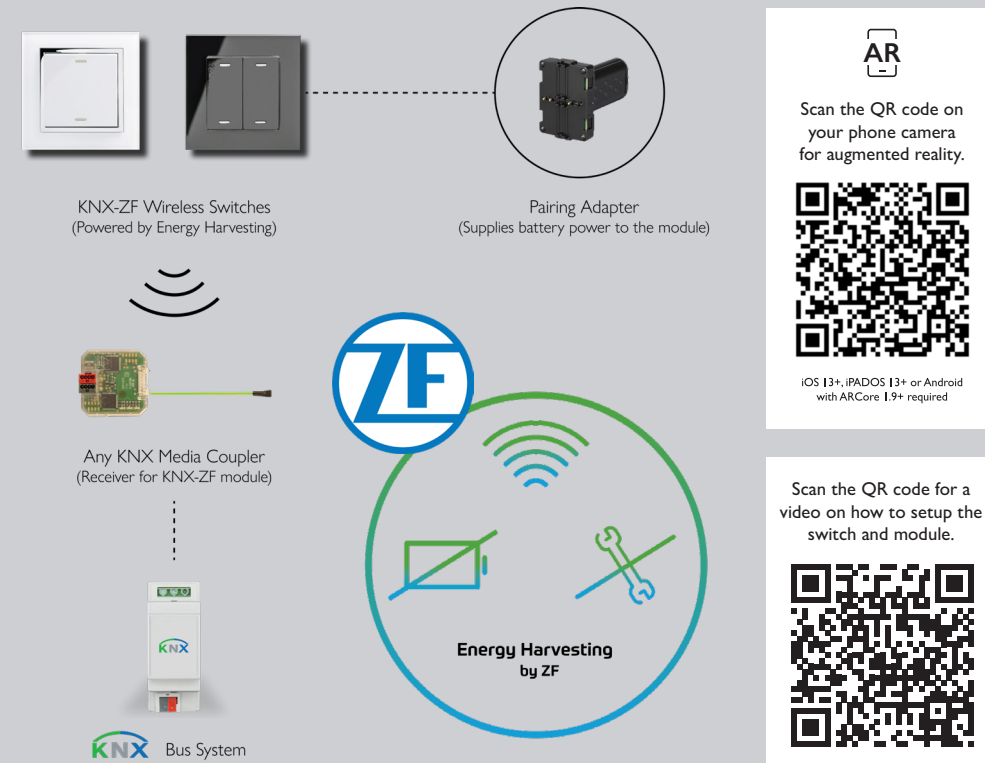
## WIRELESS. BATTERY-FREE. CABLE-FREE.™

Our Retrotouch Wireless KNX-ZF Switches are powered by energy harvesting technology and can be installed without cables and batteries, allowing you to stick them anywhere in your home. Our switches convert wireless signals into KNX telegrams. Applications include lighting, dimming and blind control, all through a KNX smart home ecosystem.



### SPECIFICATIONS / FEATURES

When the switch is pressed, the KNX-ZF module transmits a signal wirelessly to the KNX Media Coupler which then communicates to devices over the Bus System. The switches can be programmed to control any device or any function in the KNX system, for example, turning on a light or controlling your blinds.



## POWERED BY ENERGY HARVESTING.

### Features

- High quality toughened glass**  
Available as plain glass or with a chrome trim finish
- Batteries not required**  
Kinetic powered switch
- Wireless operation**  
Control your lighting / smart system with set functions
- Mount anywhere**  
Using included 3M sticky pad
- Multi-Function Buttons**  
Individual press and hold actions
- Retrofit on any UK or European standard back-box**  
Fixing screws for back box included

### Certifications

- Radio Equipment Directive RED/2014/53/EU
- Restriction Of Hazardous Substances in Electrical and Electronic Equipment Directive (RoHS) 2011/65/EU
- Restriction of Hazardous Substances in Electrical and Electronic Equipment Directive (RoHS) 2011/65/EU

### What's in the box

- Back plate with Module
- Glass front plate in Black or White finish
- 2 Button & 1 Button
- 3M Wall sticky pad
- 2 screws for back box fixing

### Specifications

- 2 Button (4 channels) & 1 Button (2 channel)
- Operational temperature: 0°C to 40°C
- Altitude: 2000m
- Dimensions: 86\*86\*14mm
- Frequency Band: 868.3 MHz
- Temperature Range: - 20 °C to + 45 °C
- RF Distance (In Buildings): Up to 30m
- RF Protocol: KNX-RF1.R
- Limited Warranty: 2 Year
- Power Supply: Self-powered

### Pairing Adaptor (One Required Per Installer)

- (Supplies battery power to the module and communicates bidirectional wireless signals).
- Dimensions: 42.1 x 58.1 x 30.4 mm
- Temperature Range: - 20 °C to + 45 °C
- Power Supply: 2 x AAA batteries (1.2 V or 1.5 V)

### MODELS & FINISHES

WHITE PG



PG: 02682

BLACK PG



PG: 02683

WHITE CT



CT: 02680

BLACK CT



CT: 02681

PART-M



PART M: 02684

PAIRING ADAPTER



SOLD SEPARATELY: 02896