

# ZIGBEE ROLLER SHUTTER RELAY SWITCH



Actuator



## Features

The Zigbee Roller Shutter Relay Switch turns a motorized roller shutter, awning or rolling sunshades into a remotely controlled one with hassle-free installation, no need for DIY work. It can be remotely controlled via smartphone. Automatic control is also possible (through a compatible home automation gateway).



### AUTO CALIBRATION

No adjustments are needed, the Relay Switch will do an automatic self-calibration on the equipment



### ULTRA LOW PROFILE

Installation in electrical boxes from >30mm



### INSTALLATION WITHOUT DIY WORK

On the existing controller or at the electrical panel (DIN Rail Box needed\*)



### UPDATE OVER THE AIR (OTA)

The relay switch is quick to update thanks to the OTA function. Updates can be carried out via a compatible home automation system.



### COMPATIBLE WITH ALL ZIGBEE ECOSYSTEMS

Zigbee 3.0, this relay switch is 100% Zigbee interoperable

## Technical specifications

**Power supply:** 230V AC ~ 50Hz

**Switching capabilities:** 230V AC – 3A

**Consumption:** <1W

**Maximum motor power:**

280W Max – 60 Nm Max – Integrated zero crossing

See page 5 – List of compatible motors available on [www.nodon.fr/en/loads](http://www.nodon.fr/en/loads)

**RF protocol:** Zigbee 3.0

**Radio frequency range:** 2.4 GHz

**RF power max:** +10dBm

**Range:** up to 40m indoors

**Operational temperature:** -20°C to 60°C

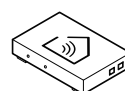
**Protection rating:** IP 20

**Rolling sunshades compatible**

**Device ID Type:** Window Covering Device (0x0202)

**Commercial Warranty:** 2 years

### Requires a Zigbee compatible home automation system



The Zigbee Roller Shutter relay Switch works only with a Zigbee compatible home automation system (automatic or remote control).

List of compatible home automation gateways available on [www.nodon.fr/en](http://www.nodon.fr/en)



## Renovation



Control a roller blind in an office

## Serenity



Remote control and presence simulation if no one is at home



Central management of restaurant terrace awnings with a smartphone

## Comfort



Hotel room roller shutter control via a tablet

### Installation

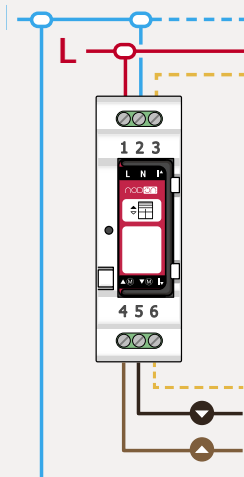


- N** Terminal for the Neutral
- L** Terminal for the Line
- ↑** Input terminal for the wired switch "up"\*\*\*
- ↓** Input terminal for the wired switch "down"\*\*\*
- ▲ (M)** Motor output terminal "up"
- ▼ (M)** Motor output terminal "down"

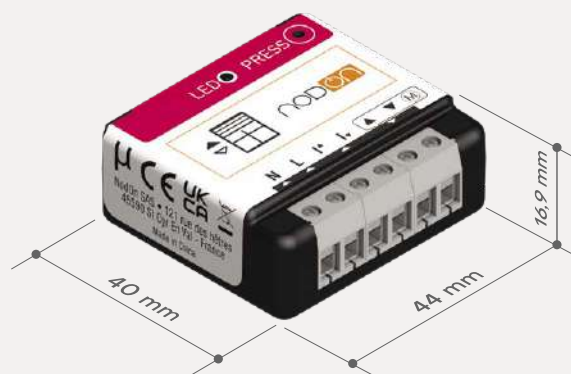
**Note:** Each terminal should be installed with a cable from 1.5mm<sup>2</sup> to 4mm<sup>2</sup> maximum, stripped of 8mm.

\*\*\*Wired switch optional (see the installation diagrams section on the next page)

\*Wiring of the Zigbee Roller Shutter Relay Switch in the DIN Rail Box



### Dimensions

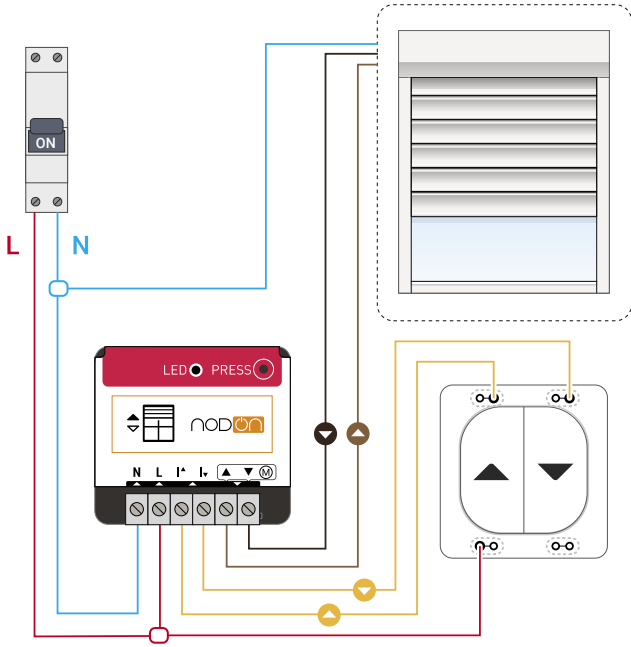


### Reference

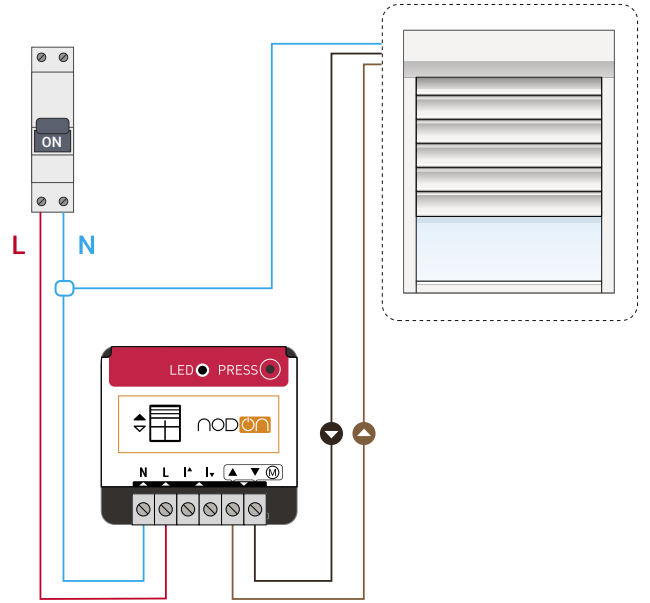
SIN-4-RS-20  
EAN: 3700313925201

# Zigbee Roller Shutter Relay Switch wiring diagrams

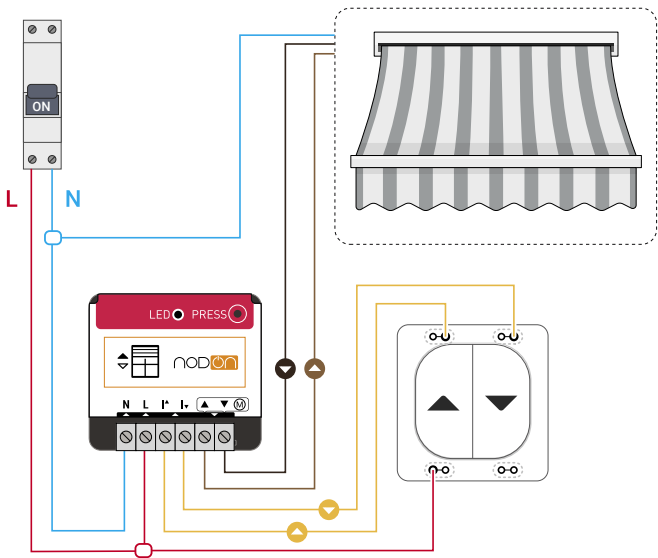
## Roller shutter



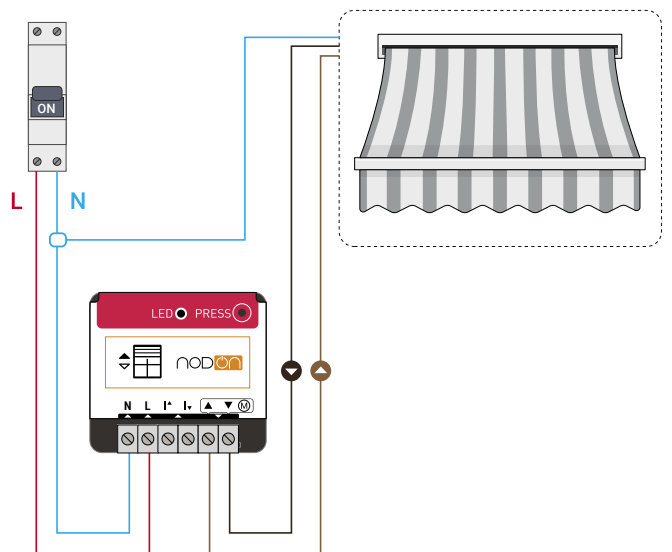
## Roller shutter without wired switch



## Awning

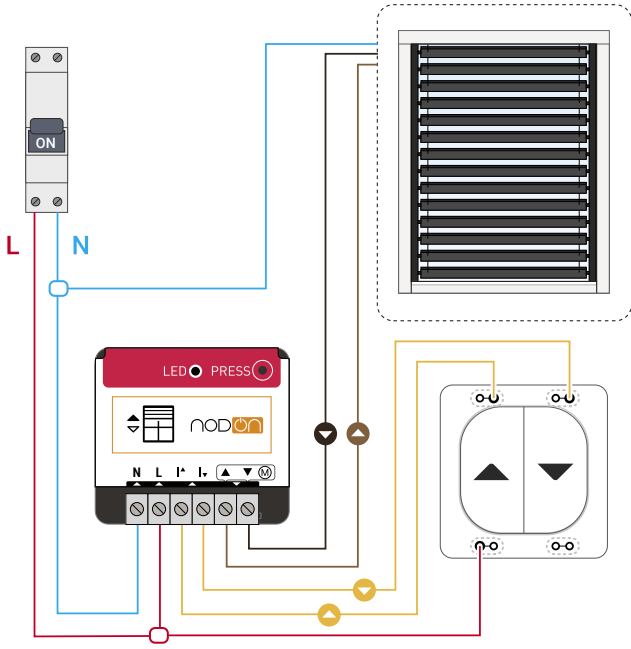


## Awning without wired switch

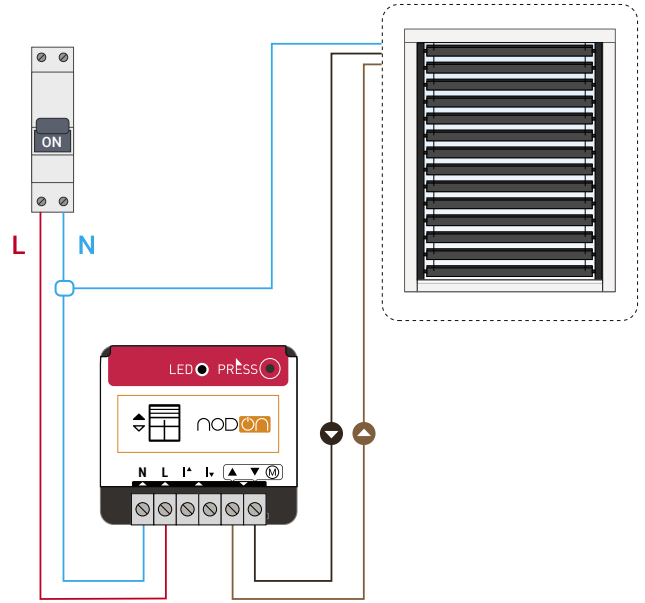


# Zigbee Roller Shutter Relay Switch wiring diagrams

## Rolling sunshades



## Rolling sunshades without wired switch



# Motors compatible with the Zigbee Roller Shutter Relay Switch

## NICE



Range	EM817	MA1517	EM	PLUSM	EMH5012	EPLUSMH5012
<b>Model</b>	8/17	15/17	15/17 • 30/17 50/17	15/17 • 30/17 50/17	50/12	50/12

## FRANCIAFLEX



Range	FRANCIASoft
<b>Model</b>	10/16 • 50/12 20/16 • 35/16



## MOTORSTAR

Range	Roll K6
<b>Model</b>	10/17 20/17 • 40/17



## SELVE

Range	SP
<b>Model</b>	2/15 • 2/20

## BECKER



Range	E01	E14	M05 (HK)	PS - PS+	M	PR+	PS	PS+	E02
<b>Model</b>	12/17 20/17 30/17 40/17 8/17 • 5/16 9/16	12/17 • 20/17 30/17 • 40/17 8/17	20/17 30/17 50/11 44/14 60/11	40/17 50/11	5/30 • 120/11 • 50/17 60/11 • 13/9 • 9/16 12/17 • 15/17 • 20/17 30/17 40/17 • 50/11 7/17 • 8/17 • 5/20 8/17 • 15/17 • 25/17	3/30 • 5/16 • 5/20 5/30 • 9/16 • 8/17 12/17 • 20/17 • 30/17 37/17 • 50/11 • 50/17 60/11	3/30 • 5/16 • 5/20 5/30 • 9/16 • 8/17 12/17 • 20/17 • 30/17 37/17 • 50/11 • 50/17 60/11	3/30 • 5/16 • 5/20 5/30 • 9/16 • 8/17 12/17 • 20/17 • 30/17 37/17 • 50/11 • 50/17 60/11	8/17 12/17 20/17 30/17
Range	E03	C01	C03	301	M05	M06	M07	M19	
<b>Model</b>	5/16 • 9/16 5/17 • 8/17 9/17 • 8/17 12/17 20/17 30/17	5/16 • 9/16 8/17 • 12/17 20/17 • 30/17 40/17	8/17 12/17 20/17 30/17	5/16 9/16 8/17 12/17 20/17 30/17 40/17	12/17 • 15/17 • 20/17 25/17 • 30/17 • 40/17 50/17 • 44/14 • 50/11 60/11 • 60/17	35/8 • 60/8 • 35/3	60/8	6/20 • 10/11	

## CHERUBINI



Range	PLUG&PLAY 3000 045	PLUG&PLAY PLUS 035	PLUG&PLAY PLUS 045	PLUG&PLAY 045	PLUG&PLAY OCEAN EASY 045	PLUG&PLAY SHORT 045	PLUG&PLAY SHORT RX 045	GARDA RX 045	OCEAN 045
<b>Model</b>	6/17 • 10/17 15/17	5/30 • 9/16	6/17 • 10/17 15/17 • 25/17 32/17 • 40/17 50/12	6/17 • 10/17 15/17	10/17 • 20/17	6/17	6/17	10/17 • 15/17 25/17 • 32/17 40/17 • 50/12	15/17 • 25/17 32/17 • 40/17 50/12
Range	OCEAN 058	GARDA 045	GARDA 058	ROLL 035	ROLL EASY 045	ROLL 045	MICRO 045	MICRO EASY 045	
<b>Model</b>	20/75 • 40/32	10/17 • 15/17 25/17 • 32/17 40/17 • 50/12	20/75 • 40/32	3/30 • 5/30 5/21 • 9/16	10/17 • 15/17 25/17	6/17 • 10/17 15/17 • 25/17 30/17 • 40/17 50/12 • 7/30 15/30	10/17	10/17	

## SIMU



Range	DMI5	DMI6	T3.5	T3.5 AUTO	T5	T5 AUTO/AUTOJOB	T5 AUTO SHORT	T5 WORK	T5E	T6
<b>Model</b>	08/17 • 10/17 15/17 • 20/17 25/17 • 30/17 35/17 • 40/12 50/12	100/12 • 120/12 40/17 • 55/17 60/12 • 70/17 80/12 • 85/17	3/23 • 3/30 4/16 • 6/16 6/18 • 9/16 9/16 • 10/12 13/10	4/16 • 9/16 13/10	8/17 • 10/17 10/12 • 15/12 6/12 • 20/17 15/15 • 15/17 20/10 • 20/12 20/17 • 25/17 30/17 • 35/07 35/17 • 40/12 50/12	6/17 • 10/17 15/17 • 20/17 25/17 • 35/17	6/17	6/17 10/17 15/17 20/17 25/17 35/17	8/17 • 10/17 15/17 • 20/17 25/17 • 35/17 50/12	40/17 • 55/17 60/12

## SOMFY



Gamme/Range	ILMO 50 WT	MS100	MS200
<b>Model</b>	6/17 10/17 • 20/17 30/17 • 35/17	10/17	30/17



Compatible with equivalents mechanical stop motors if <60 Nm