

ROLLER SHUTTER RELAY SWITCH



Features

The EnOcean Roller Shutter Relay Switch turns a motorized roller shutter, awning or rolling sunshades into a remotely controlled one with hassle-free installation, no need for DIY work. It enables you to remotely control the equipment thanks to a new radio controller (wireless remote or wall switch, button). Automatic control is also possible (through a compatible home automation gateway).

AUTO CALIBRATION



No adjustments are needed, the Relay Switch will do an automatic self-calibration on the equipment

ROLLING SUNSHADES COMPATIBLE



The module makes it possible to connect rolling sunshades

ULTRA LOW PROFILE



Installation in electrical boxes from >30mm

INSTALLATION WITHOUT DIY WORK



On the existing controller or at the electrical panel (DIN Rail Box needed**)

REMOTE COMMISSIONING



Wireless installation without physical intervention

Technical specifications

Power supply: 230V AC ~ 50Hz

Switching capabilities: 230V AC – 3A

Maximum engine power: 280W Max – 60 Nm Max
See page 4 - List of compatible engines available on www.nodon.fr/loads

Consumption: <1W

Radio frequency range: 868.0 to 868.6 MHz

RF power max: +3dBm

Range: up to 30m indoors

Operational temperature: -20°C to 60°C

Protection rating: IP 30

Pairing: up to 24 controllers

EEP (EnOcean Profile): D2-05-00



List of compatible home automation gateways available on www.nodon.fr/en

Renovation



Add a new wireless and battery-free controller (wall switch, remote...) for remote control



Control a roller blind in an office



Central management of restaurant terrace awnings with a wireless and battery-free remote control

Serenity



Remote control and presence simulation if no one is at home

Comfort



Hotel room roller shutter control

Installation

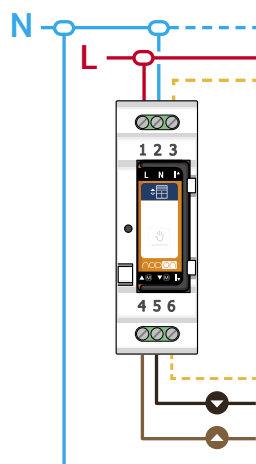


- N** Terminal for the Neutral
- L** Terminal for the Line
- |▲** Input terminal for the wired switch "up"*
- |▼** Input terminal for the wired switch "down"*
- ▲(M)** Engine output terminal "up"
- ▼(M)** Engine output terminal "down"

Note: Each terminal can accept a cable of 2.5mm² maximum

*Wired switch optional (see the installation diagrams section on the next page)

****Wiring of the Roller Shutter Relay Switch in the DIN Rail Box**



Dimensions

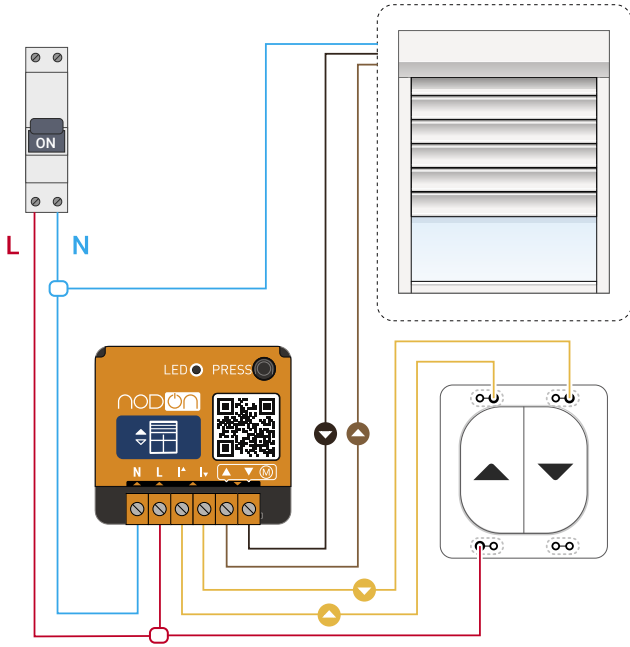


Reference

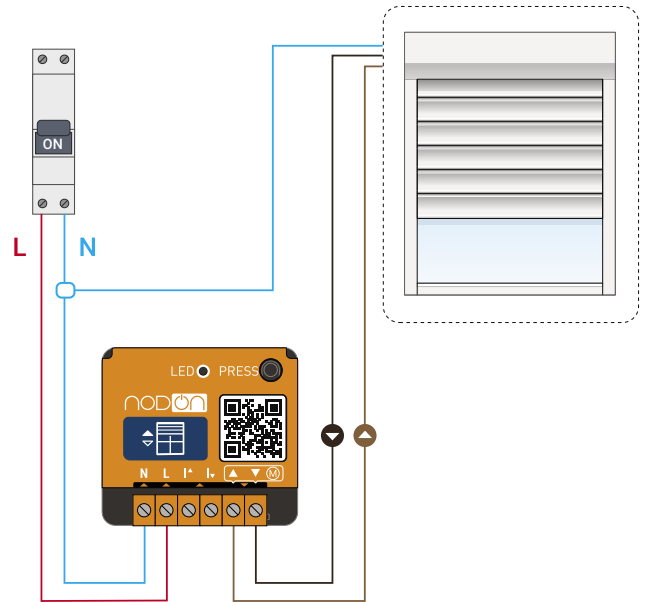
SIN-2-RS-01
EAN: 3700313921432

Roller Shutter Relay Switch wiring diagrams

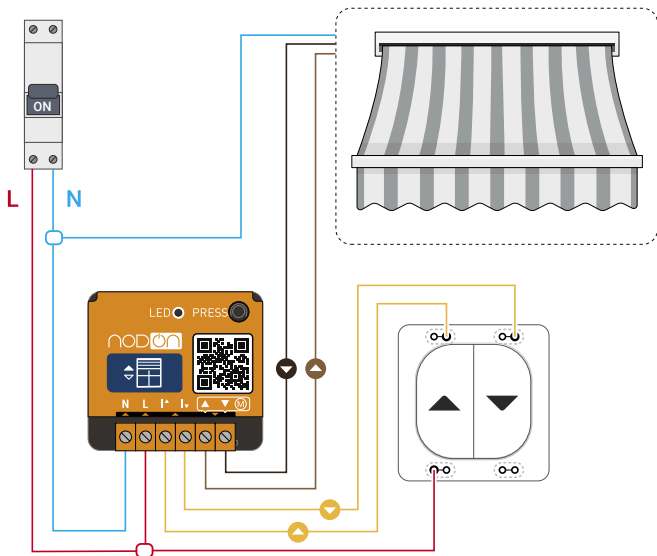
Roller shutter



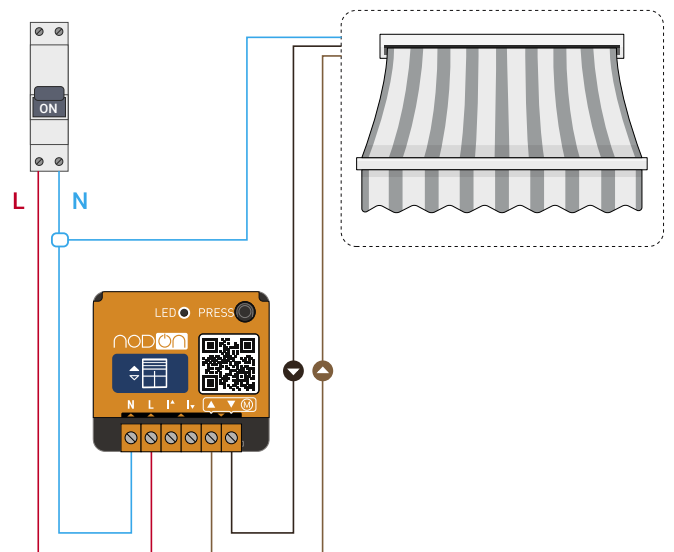
Roller shutter without wired switch



Awning

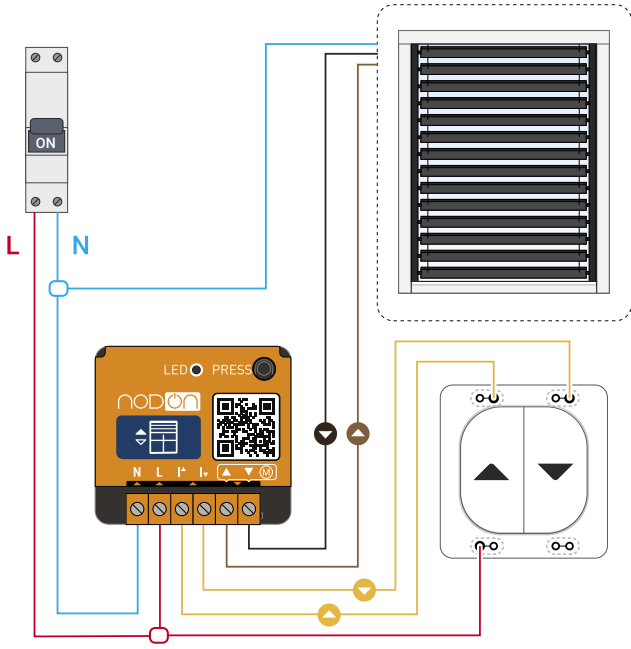


Awning without wired switch

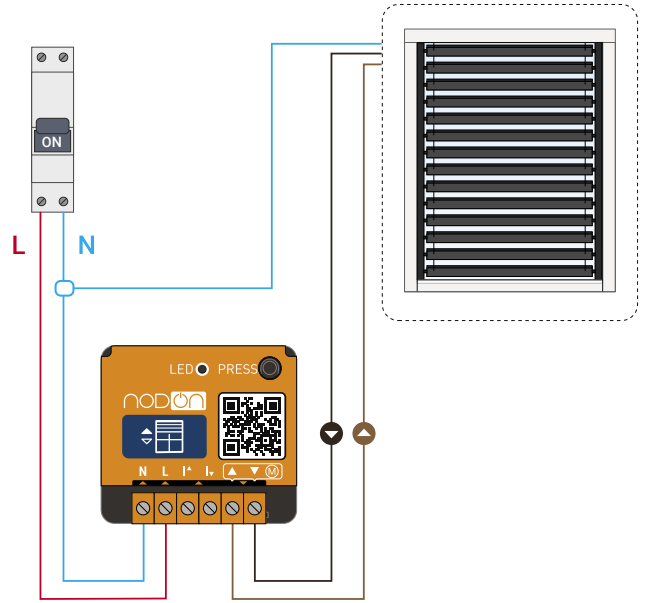


Roller Shutter Relay Switch wiring diagrams

Rolling sunshades



Rolling sunshades without wired switch



Engines compatible with the Roller Shutter Relay Switch

NICE



Range	EM817	MA1517	EM	PLUSM	EMH5012	EPLUSMH5012
Model	8/17	15/17	15/17 • 30/17 50/17	15/17 • 30/17 50/17	50/12	50/12

FRANCIAFLEX



Range	FRANCIASoft
Model	10/16 • 50/12 20/16 • 35/16



MOTORSTAR

Range	Roll K6
Model	10/17 20/17 • 40/17



SELVE

Range	SP
Model	2/15 • 2/20

BECKER



Range	E01	E14	M05 (HK)	PS - PS+	M	PR+	PS	PS+	E02
Model	12/17 20/17 30/17 40/17 8/17 • 5/16 9/16	12/17 • 20/17 30/17 • 40/17 8/17	20/17 30/17 50/11 44/14 60/11	40/17 50/11	5/30 • 120/11 • 50/17 60/11 • 13/9 • 9/16 12/17 • 15/17 • 20/17 30/17 40/17 • 50/11 7/17 • 8/17 • 5/20 8/17 • 15/17 • 25/17	3/30 • 5/16 • 5/20 5/30 • 9/16 • 8/17 12/17 • 20/17 • 30/17 37/17 • 50/11 • 50/17 60/11	3/30 • 5/16 • 5/20 5/30 • 9/16 • 8/17 12/17 • 20/17 • 30/17 37/17 • 50/11 • 50/17 60/11	3/30 • 5/16 • 5/20 5/30 • 9/16 • 8/17 12/17 • 20/17 • 30/17 37/17 • 50/11 • 50/17 60/11	8/17 12/17 20/17 30/17
Range	E03	C01	C03	301	M05	M06	M07	M19	
Model	5/16 • 9/16 5/17 • 8/17 9/17 • 8/17 12/17 20/17 30/17	5/16 • 9/16 8/17 • 12/17 20/17 • 30/17 40/17	8/17 12/17 20/17 30/17	5/16 9/16 8/17 12/17 20/17 30/17 40/17	12/17 • 15/17 • 20/17 25/17 • 30/17 • 40/17 50/17 • 44/14 • 50/11 60/11 • 60/17	35/8 • 60/8 • 35/3	60/8	6/20 • 10/11	

CHERUBINI



Range	PLUG&PLAY 3000 Ø45	PLUG&PLAY PLUS Ø35	PLUG&PLAY PLUS Ø45	PLUG&PLAY Ø45	PLUG&PLAY OCEAN EASY Ø45	PLUG&PLAY SHORT Ø45	PLUG&PLAY SHORT RX Ø45	GARDA RX Ø45	OCEAN Ø45
Model	6/17 • 10/17 15/17	5/30 • 9/16	6/17 • 10/17 15/17 • 25/17 32/17 • 40/17 50/12	6/17 • 10/17 15/17	10/17 • 20/17	6/17	6/17	10/17 • 15/17 25/17 • 32/17 40/17 • 50/12	15/17 • 25/17 32/17 • 40/17 50/12
Range	OCEAN Ø58	GARDA Ø45	GARDA Ø58	ROLL Ø35	ROLL EASY Ø45	ROLL Ø45	MICRO Ø45	MICRO EASY Ø45	
Model	20/75 • 40/32	10/17 • 15/17 25/17 • 32/17 40/17 • 50/12	20/75 • 40/32	3/30 • 5/30 5/21 • 9/16	10/17 • 15/17 25/17	6/17 • 10/17 15/17 • 25/17 30/17 • 40/17 50/12 • 7/30 15/30	10/17	10/17	

SIMU



Range	DMI5	DMI6	T3.5	T3.5 AUTO	T5	T5 AUTO/AUTOJOB	T5 AUTO SHORT	T5 WORK	T5E	T6
Model	08/17 • 10/17 15/17 • 20/17 25/17 • 30/17 35/17 • 40/12 50/12	100/12 • 120/12 40/17 • 55/17 60/12 • 70/17 80/12 • 85/17	3/23 • 3/30 4/16 • 6/16 6/18 • 9/16 9/16 • 10/12 13/10	4/16 • 9/16 13/10	8/17 • 10/17 10/12 • 15/12 6/12 • 20/17 15/15 • 15/17 20/10 • 20/12 20/17 • 25/17 30/17 • 35/07 35/17 • 40/12 50/12	6/17 • 10/17 15/17 • 20/17 25/17 • 35/17	6/17	6/17 10/17 15/17 20/17 25/17 35/17	8/17 • 10/17 15/17 • 20/17 25/17 • 35/17 50/12	40/17 • 55/17 60/12

SOMFY



Gamme/Range	ILMO 50 WT	MS100	MS200
Model	6/17 10/17 • 20/17 30/17 • 35/17	10/17	30/17



Compatible with equivalents mechanical stop motors if <60 Nm